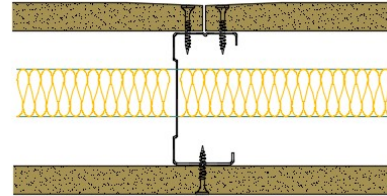


70-S-52(25) - SPEEDLINE System Data Sheet - Version V1 (24-10-23)

SPEEDLINE 70mm 'C' Stud Partition @600mm Ctrs,
with Siniat GTEC 15mm Standard Board each side,
25mm APR



System Performance Breakdown

Fire Resistance:

BS476 Part 22:1987:

Test Ref & Date or Applied Ref & Report:

Max Height:

Thickness:

Duty Grade: BS 5234: Part 2:1992:

Sound Insulation:

30/30 Minutes (Integrity/Insulation).

BRE 269826 - BRE Report P102396-1011C

Refer to Speedline Specification Clause

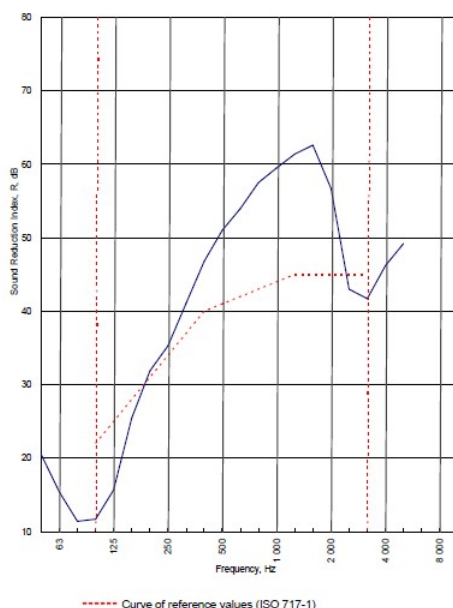
102 mm. (At Base Track, Excluding Finishes)

Heavy - Annexes A-F

41 R_w dB, Date Tested or Assessed Against - 50-S-64(25)

Test Code:	H17507AA
Test Date:	28/07/2011

Freq. Hz	R dB
50	20.5
63	15.4
80	11.4
100	11.7
125	15.7
160	25.5
200	31.9
250	35.3
315	41.1
400	46.8
500	51.0
630	54.0
800	57.5
1 000	59.5
1 250	61.4
1 600	62.6
2 000	56.7
2 500	43.0
3 150	41.7
4 000	46.2
5 000	49.2
6 300	
8 000	
10 000	



Rating according to BS EN ISO 717-1:1997			
R_w (C;Ctr) = 41 (-4;-11) dB			
Max dev. 10.3 dB at 100 Hz			
Evaluation based on laboratory measurement results obtained by an engineering method:	$C_{20-3150} = -5$ dB	$C_{50-5000} = -4$ dB	$C_{100-5000} = -3$ dB
	$C_{10-50-3150} = -13$ dB	$C_{10-50-5000} = -13$ dB	$C_{10-100-5000} = -11$ dB

TESTED AT ONE OF THE UKAS ACCREDITED LABORATORIES BELOW

B.T.C (H-Ref on Graph)	
B.R.E	
AIRO	
S.R.L	

Customer: Metsec plc Hepsec Division



BTC 17507A: Page 9 of 11

SPEEDLINE Drywall Systems, Adsetts House, 16 Europa View, Sheffield Business Park, Sheffield, S9 1XH.

Tel: 0114 231 8030.

Email: enquiries@speedlinedrywall.co.uk

(As per the requirements set out in ISO/IEC 17025:2017 regarding test data the results stated have been carried out by voestalpine Metsec plc as part of the contract to supply Speedline Metal Sections to SIG Plc)